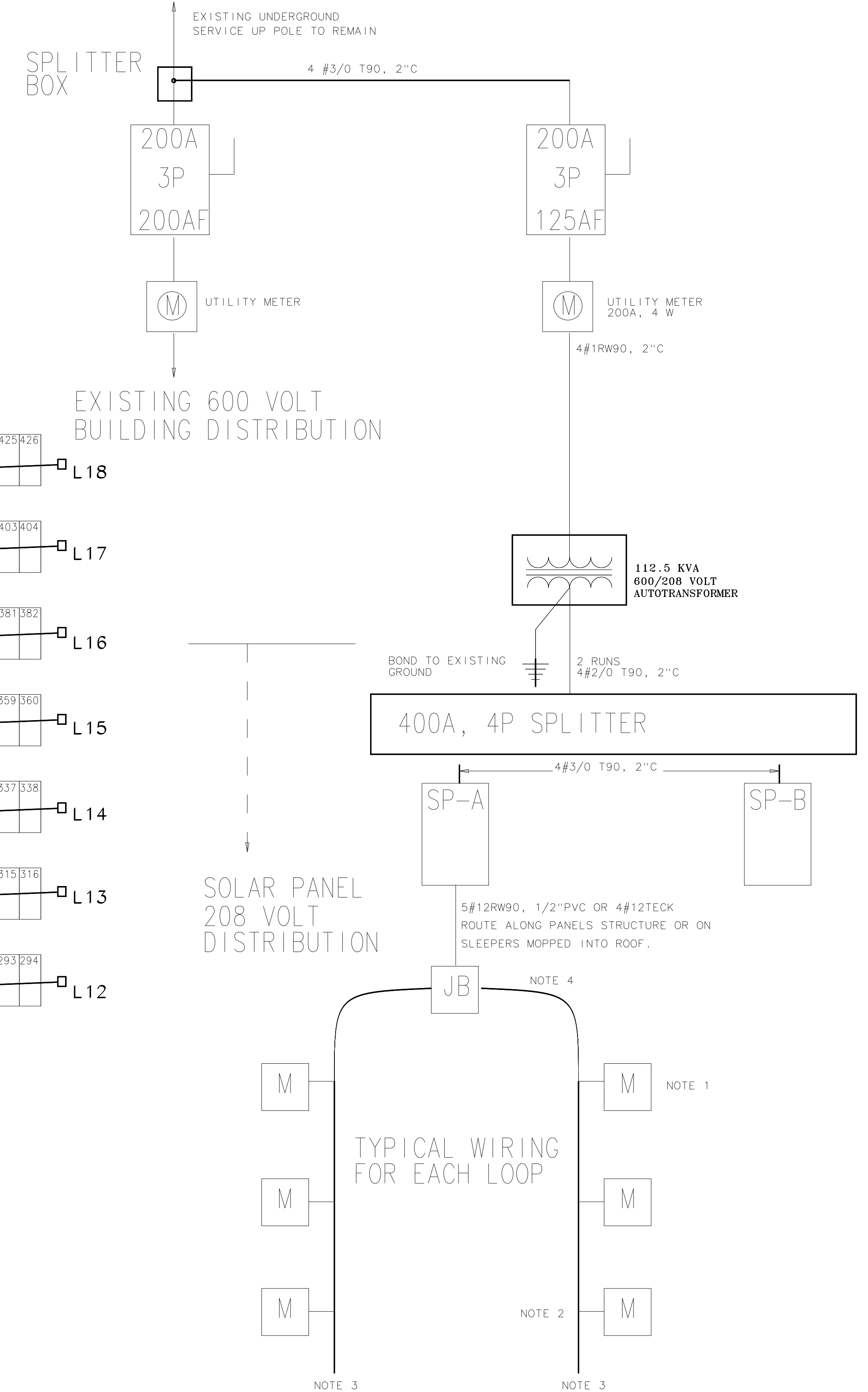


SOLAR PANEL LAYOUT
NTS

□ JUNCTION BOX (JB) TO SPLICE ENPHASE CABLE TO ENPHASE CABLE OR TO FEEDER CABLE.
— ENPHASE CABLE ET10 or EQUALL
— 4 #12TECK CABLE

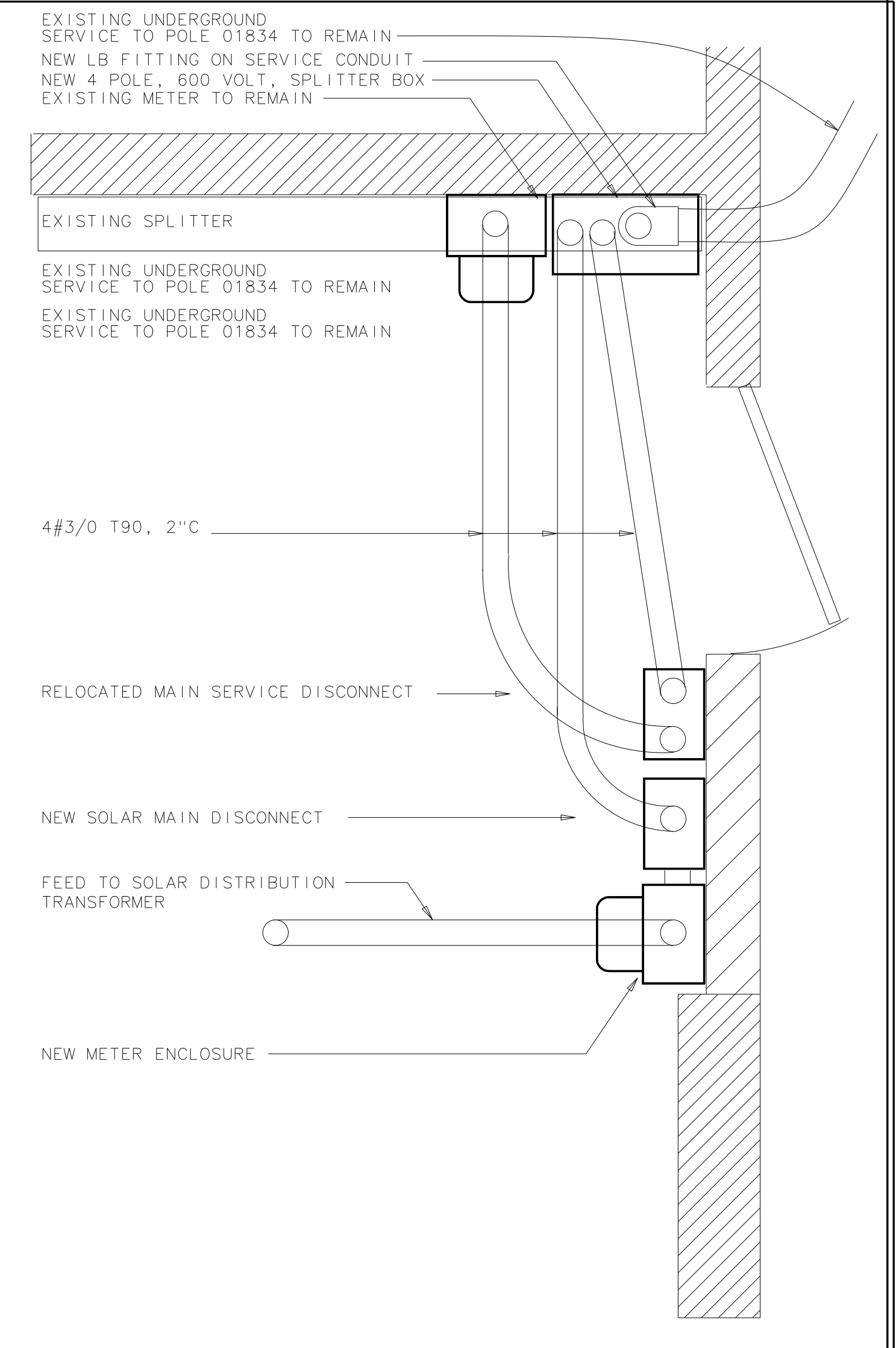
EXISTING 600/347 VOLT SERVICE ON BPDC POLE 1834



EXISTING 600 VOLT BUILDING DISTRIBUTION

SOLAR PANEL 208 VOLT DISTRIBUTION

SINGLE LINE DIAGRAM

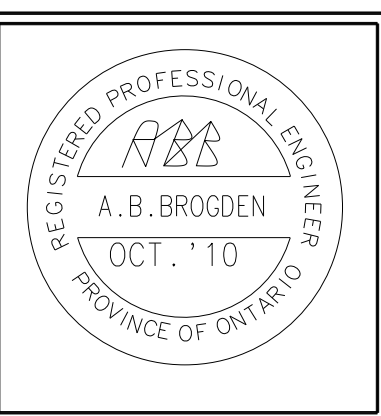


BASEMENT PARTIAL FLOOR PLAN
NTS

- NOTES**
- M215 MICROINVERTER. PLUGGED INTO ENPHASE CABLE.
 - REFER TO PANEL SCHEDULE FOR QUANTITY OF MICROINVERTERS CONNECTED TO EACH FEEDER.
 - SEAL END OF ENPHASE CABLE WITH A BRANCH TERMINATOR.
 - ENPHASE CABLE 208VAC, 5 CONDUCTOR, ET 10 OR 17 CONNECTED TO EACH FEEDER.

1	ISSUED FOR APPROVAL	10/18/10	AB
NO.	REVISION	DATE	BY

A.B. BROGDEN LTD
ENGINEERING CONSULTANTS
251 NORTH VIDAL STREET
SARNIA, ONTARIO.



PROJECT
RIVER CITY VINEYARD
260 MITTON STREET, SARNIA, ONTARIO.
SOLAR SINGLE LINE

DRAWING TITLE
SOLAR PANEL LAYOUT AND SINGLE LINE

NOTE :
1 - THIS DRAWING IS DRAWN ELECTRONICALLY.
2 - IT IS INTENDED TO BE 'D' SIZE (36" x 24")

PROJECT NO. 10,162
DATE OCT. 20, 2010
DR. A. BROGDEN CH. A. BROGDEN
DRAWING NO. REV. E-101 1